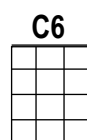
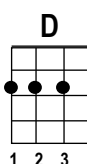
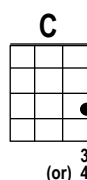
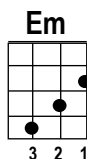
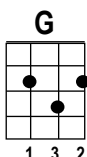


STAND BY ME

By Jerry Leiber, Mike Stoller & Ben E. King in 1961

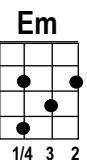
KEY: G
4/4 TIME
ROCK GROOVE

Starting Note: B



Em

Using G Chord



INTRO: G/// /// Em/// /// C/// D/// G/// /// When the

VERSE 1: G/// /// Em /// /// night has come and the land is dark and the

C/// D/// G/// /// moon is the only light we'll see. No I

G/// /// Em/// /// won't be a-fraid, oh I won't be a-fraid just as

C/// D/// G/// /// long as you stand, stand by me. So darlin', darlin'

CHORUS 1: G/// /// Em/// /// Stand by me, oh stand by me, oh

C/// D/// G/// /// stand, stand by me, stand by me. If the

VERSE 2: G/// /// Em /// /// sky that we look up-on should tumble and fall or the

C/// D/// G/// /// mountains should crumble to the sea. I won't

G/// /// Em/// /// cry, I won't cry, no I won't shed a tear. Just as

C/// D/// G/// /// long as you stand, stand by me. And darlin', darlin'

CHORUS 2 & END: G/// /// Em/// /// Stand by me, oh stand by me, oh

C/// D/// G/// /// stand, stand by me, stand by me. When-ever you're in trouble won't you

G/// /// Em/// /// stand by me, oh stand by me, oh

C/// D/// G/// /// stand, stand by me, stand by me. Oh

C/// D/// G/// /// stand, stand by me, stand by me. C/// D/// G/// G/ C6/ G/ REST

Revised 8/2018

Arranged by Cali Rose

www.calirose.com • info@calirose.com • 310-285-3506 • Soup To Nuts Music • For Educational Use Only